

SAM4S



Gcube

Be **Flexible** with You!

Flexible Design

Front & Top Feeding



▲Front Feeding



▲Top Feeding



- ▶ Both types are waterproof without splash cover
- ▶ It can be set to 180 or 203dpi in one printer
- ▶ Fast speed printing up to 250mm/sec

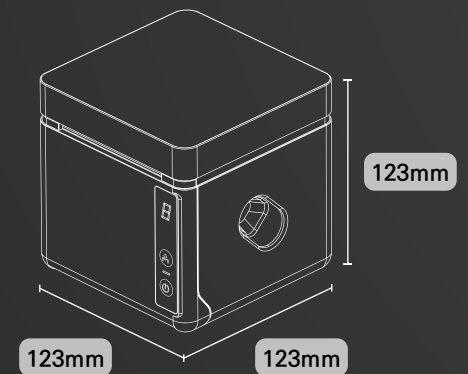
Color Variation



▲Black



▲White



- ▲ The smallest receipt printer in the world

Flexible Composition

Setting



LED Notification

- ▶ Printer can be set by LED notification
- ▶ Printer status notification by LED

e.g



▲P : Paper End



▲C : Cover Open



NFC Function

- ▶ NFC allows you to set up the printer on your mobile phone



Installation

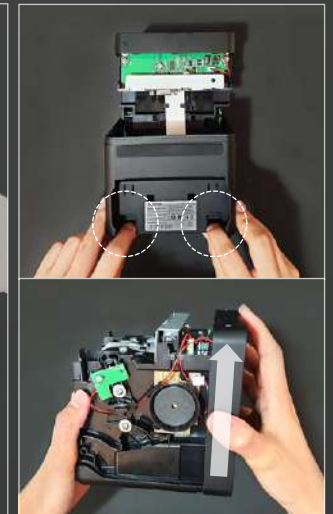
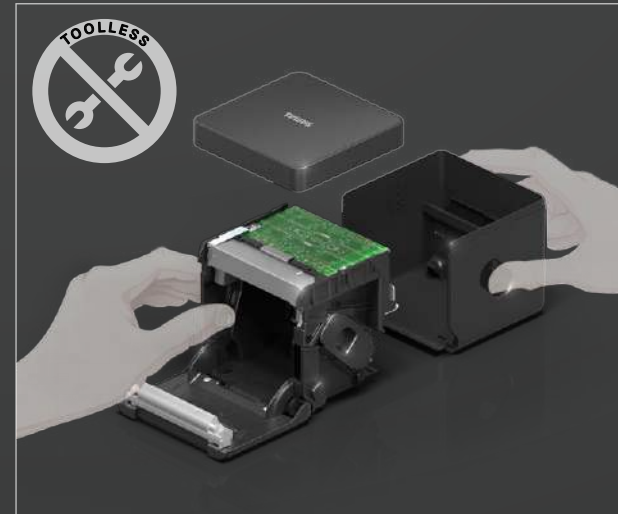


▲Wall Type



▲Under Shelf Type

Assembly



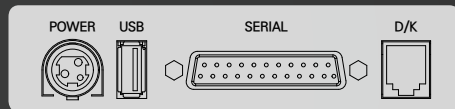
Communication

Wi-Fi or Bluetooth module is built in

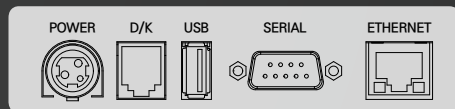
- ▶ Compatible with all major operating systems including Android, iOS and Windows
- ▶ Apple MFi certified



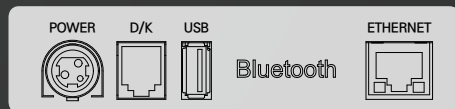
Interface



▲ USB+Serial



▲ USB+Serial+Ethernet



▲ USB+Bluetooth+Ethernet



▲ USB+Wi-Fi+Ethernet



Specification

Model		Gcube-100	Gcube-102
Printing	Resolution	180dpi	203dpi
	Speed	250mm/sec	
	Cutting	Partial cut/Full cut	
Paper	Width	Max. 80.0/58.0mm	
	Diameter	Max. Ø 80.0mm	
Reliability	TPH	1 x 10 ⁸ Pulses/150km	
	Cutter	1.5 million cuts	
Connectivity	Interface	– USB + Serial (D-Sub25) – USB + Serial (D-Sub9) + Ethernet – USB + Wi-Fi + Ethernet – USB + Bluetooth + Ethernet	
	NFC Function	ISO/IEC 14443A compatible	
Software	Emulation	EPSON, STAR	
	Driver/Utility	Windows driver, OPOS driver, JPOS driver (Linux), CUPS driver (Linux&Mac), Utility program	
	SDK	Windows, OPOS, JPOS, CUPS, Android, iOS	
	OS	POSReady 7, Windows Embedded 8 Industry, Windows 10 IoT Enterprise, Windows 7, Windows 8/8.1, Windows 10, Linux, Mac OS, Android, iOS	
General	Dimension (WxDxH)	123x123x123mm	
	Net weight	750g	
	Color	Black/White	
Option	Installation	Wall mount/Under shelf	
	Accessory	Kitchen bell/2" Partition	
	Sensor	Paper near end sensor	

*Without any prior notice, design and specification are subject to change

SAM4S

Shinheung Precision Co., Ltd. / Seoul Office

9F, Flat-C, Woolim Lion's Valley, Gasan Digital 1Ro 168, Geumcheon-gu, Seoul, 08507, Korea
Tel. +82-2-2101-9623 | Fax. +82-2-2101-9690 | www.sam4s.com

